

CHATHAM COUNTY HEALTH DEPARTMENT ENVIRONMENTAL HEALTH DIVISION

80 East Street • P. O. Box 130 • Pittsboro, NC 27312-0130
Phone (919) 542-8208 • Fax (919) 542-8288

OFFICE USE ONLY	
TPN	_____
Permit No.	_____
Date	_____
EHS	_____
System Type	_____

Improvement Permit for Wastewater Systems ARTICLE II-CHAPTER 130A OF THE NC GENERAL STATUTES

NEW REPAIR EXPANSION REVISED

An Improvement Permit is issued to Selinco, Ltd for
a 6.55 acre site located Deer Mountain Lot 14

in Chatham County. It is specifically issued for the following facility:

Facility: Residential () Non-Residential ()
 No. Bedrooms 4 No. Residents/Employees 8 max
 Type Wastewater: Residential () Commercial ()
 Initial System Type: I () II () III () IV () V () VI ()
 Description _____
 Type System: Shallow Conventional () LPP ()
 Other Pump to Accepted 25% Reduction
 Design Flow 400 EPGD Application Rate 2.75 GPD/ft²
 Size Tank(s) w/Risers and Effluent Filter ST 1000 Gal PT 1000 Gal
 Nitrification Line (Length/Width/Max Depth) 445' x 3' x 16"

(On contour in approved septic area; sch. 40 PVC required over step-downs)
 Repair System Type: I () II () III () IV () V () VI ()
 Description Pump to Accepted 25% Reduction
 Special Conditions _____

A plat with site plan showing specific location of the facility, the site for the proposed wastewater system, existing buildings, property lines, water supplies, surface waters, the conditions for any site modifications; and any other information required by the department must be attached to be valid.
Septic tank riser 6" above grade required over outlet access port as a visible marker for the septic tank.
Solid PVC with elbows must be used to construct conveyance over dams or stepdowns.

This permit is valid [] without expiration [x] for five years but is subject to revocation if the site is altered, soil disturbed, set-backs violated, or the plans of intended use are changed.
The Improvement Permit shall not be affected by change in ownership.

THIS IS NOT AUTHORIZATION TO INSTALL. An authorization for Wastewater Construction must be obtained from this department before installation.

Issued by Tom C. Ritter RS
Environmental Health Specialist

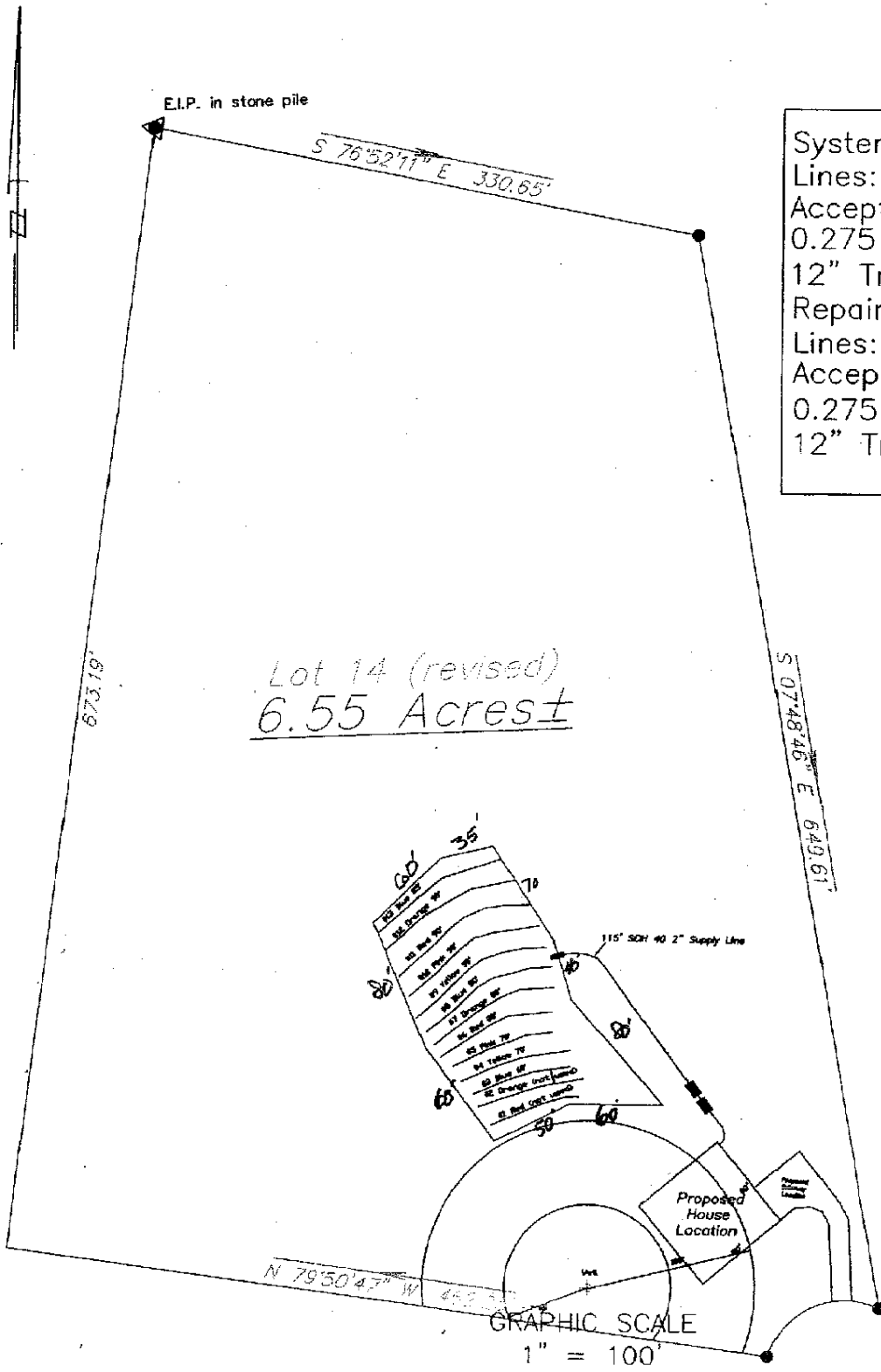
N.C. Registration Number 1991
Date 2-8-08

Name Deer Mountain Lot 14 911 Address

Deer Mountain, Lot 14 Selinco LTD 4-Bedroom Septic System Layout

System: Pressure Manifold
 Lines: 9-13, (445')
 Accepted Status System
 0.275 Soil LTAR
 12" Trench Bottom

Repair: Pressure Manifold
 Lines: 3-8, (440')
 Accepted Status System
 0.275 Soil LTAR
 12" Trench Bottom



Central Carolina
 Soil Consulting
 919-784-9449
 Project # 331

Selinco LTD
Deer Mountain Lot 14

4-Bedroom Home (480 gal./day)

<u>LINE #</u>	<u>COLOR</u>	<u>BS</u>	<u>HI</u>	<u>FS</u>	<u>ELEVATION</u>	<u>LINE LENGTH</u>	<u>Design Length</u>
TBM		7.5		100.0		<u>in field</u>	<u>installation</u>
INST. 1			107.5				
1	Red			0.8	106.7	55	not used
2	Orange			2.7	104.8	60	not used
3	Blue			4.1	103.4	67	60
4	Yellow			5.9	101.6	70	70
5	Pink			7.9	99.6	76	70
6	Red			9.3	98.2	80	80
7	Orange			11.1	96.4	85	80
8	Blue			12.7	94.8	88	80
9	<i>Yellow</i>			<i>14.1</i>	<i>93.4</i>	<i>90</i>	<i>90</i>
10	<i>Pink</i>			<i>15.6</i>	<i>91.9</i>	<i>90</i>	<i>90</i>
11	<i>Red</i>			<i>17.0</i>	<i>90.5</i>	<i>90</i>	<i>90</i>
12	<i>Orange</i>			<i>18.6</i>	<i>88.9</i>	<i>91</i>	<i>90</i>
13	<i>Blue</i>			<i>19.9</i>	<i>87.6</i>	<i>88</i>	<i>85</i>
					Total	1030	800

System Type	<u>System</u>	<u>Repair</u>
	Lines 9-13	Lines 3-8
	Accepted Status System	Accepted Status System
	EZ-FLOW	EZ-FLOW
Suggested Soil LTAR (gal/day/ft ²)	0.275	0.275
System Installation LTAR	0.275	0.275
Total Line Length	445	440
Square Footage	1335	1320
Proposed Trench Bottom	12" 1/4"	12" 1/4"

Distribution Method Pressure Manifold Pressure Manifold

Notes: TBM is cut tree below line #13

**Selinca, LTD
Deer Mountain, Lot 14
System, Tap Chart**

Bench Mark	7.50	is = 100.00 Location of BM							Elevation Head	-5.60
Pump tank elev.	4	103.50	Pump elev.	98.50	Manifold elev.					92.90
line	color	rod read	Elevation	length	hole size	flow/tap	gal/day	trench area	LINE LTAR	
9	Yellow	14.1	93.40	90	1/2in SCH 40	7.11	96.00	270	0.3556	
10	Pink	15.60	91.90	90	1/2in SCH 40	7.11	96.00	270	0.3556	
11	Red	17	90.50	90	1/2in SCH 40	7.11	96.00	270	0.3556	
12	Orange	18.60	88.90	90	1/2in SCH 40	7.11	96.00	270	0.3556	
13	Blue	19.90	87.60	85	1/2in SCH 40	7.11	96.00	255	0.3765	

total feet = 445 gal/min = 35.55 LTAR = 0.2750

% of Dose Vol.	75	<u>Des. Flow</u>	480	<u>LTAR + %5</u>	0.2888
Dose Volume	216.94	Pump Run=	13.50	(ltar W/ INOV)	0.3667
Dose Pump Time	6.10	Tank Gal/IN	21	(ltar W/ INOV + 5%)	0.3850
Drawdown in Inches	10.33				

Sheet1

**Selinca, LTD
Deer Mountain, Lot 14
Repair, Tap Chart**

Bench Mark	7.50	is = 100.00 Location of BM				Elevation Head		4.10	
Pump tank elev.	4	103.50	Pump elev.	98.50	Manifold elev.		102.60		
line	color	rod read	Elevation	length	hole size	flow/tap	gal/day	trench area	LINE LTAR
3	Blue	4.1	103.40	65	1/2in SCH 80	5.48	69.64	195	0.3571
4	Yellow	5.90	101.60	70	1/2in SCH 80	5.48	69.64	210	0.3316
5	Pink	7.9	99.60	70	1/2in SCH 80	5.48	69.64	210	0.3316
6	Red	9.30	98.20	80	1/2in SCH 40	7.11	90.36	240	0.3765
7	Orange	11.10	96.40	80	1/2in SCH 40	7.11	90.36	240	0.3765
8	Blue	12.70	94.80	80	1/2in SCH 40	7.11	90.36	240	0.3765

total feet = 445 gal/min = 37.77 LTAR = 0.2750

LTAR + %5 0.2888

% of Dose Vol.	75	<u>Des. Flow</u>	480	(ltar W/ INOV)	0.3667
Dose Volume	216.94	Pump Run=	12.71	(ltar W/ INOV + 5%	0.3850
Dose Pump Time	5.74	Tank Gal/IN	21		
Drawdown in Inches	10.33				